



DALES & PEAKS



Ashcroft Cottage Butts Road

Ashover, Chesterfield, S45 0AX

£1,500 PCM



Ashcroft Cottage Butts Road

Ashover, Chesterfield, S45 0AX

A quaint and charming three-bedroom, cottage-style home, beautifully positioned in the heart of the highly sought-after village of Ashover. Surrounded by peaceful countryside, an abundance of tranquil walks, and within walking distance of the village's amenities

The accommodation comprises an entrance hall leading to a cosy living room and a characterful kitchen featuring a traditional Rayburn.

The first floor offers three bedrooms, including a spacious master bedroom with en-suite, together with a family bathroom. The third bedroom benefits from stairs leading to a further upper-floor room, providing versatile additional space that could be used as a home office or additional living area.

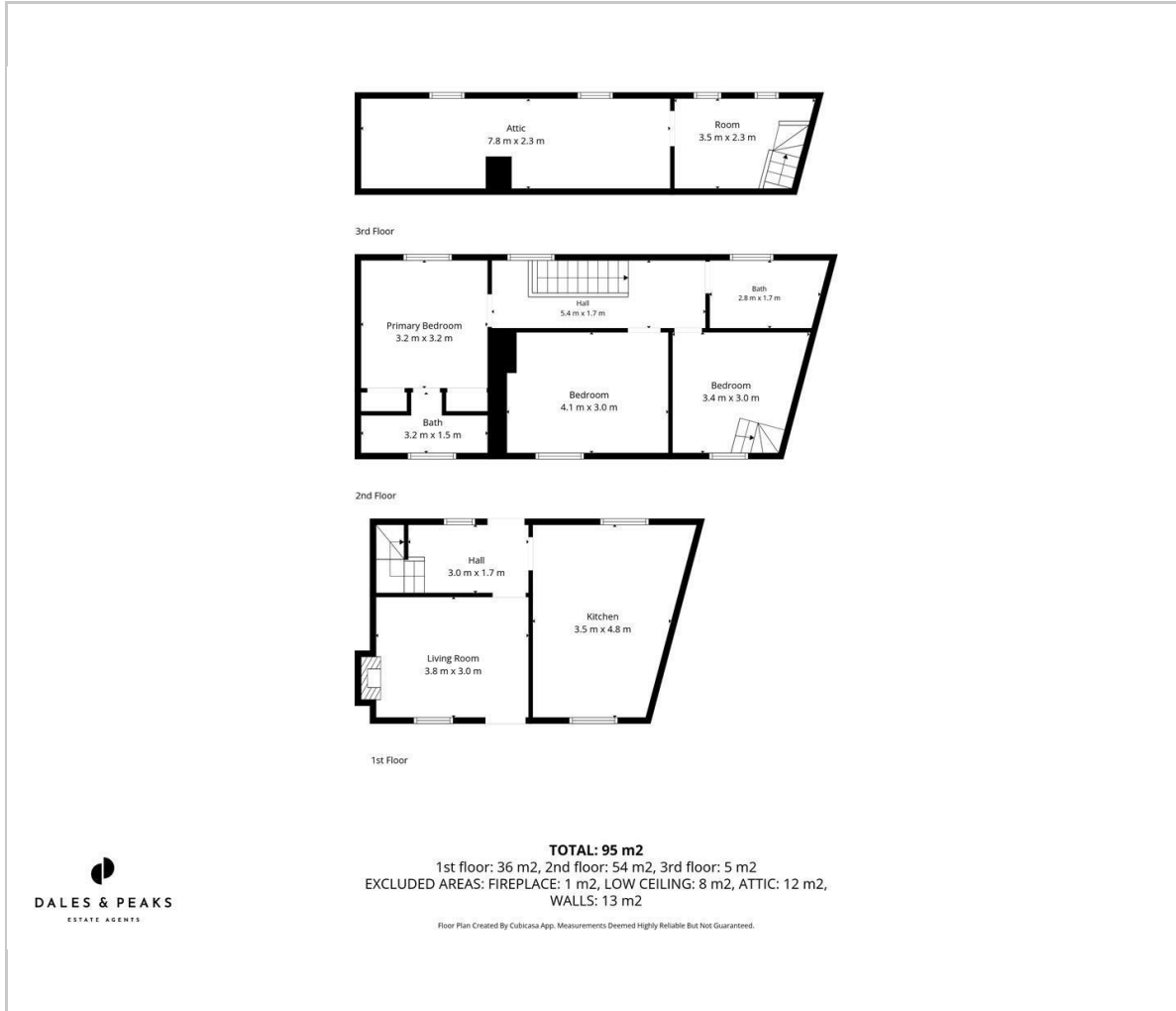
Outside, the property enjoys a cosy garden space, ideal for relaxing and enjoying the peaceful surroundings.

Rental information





Floor Plan



Viewing

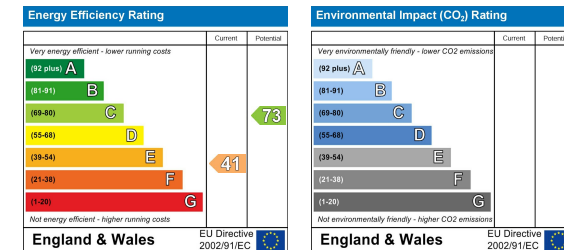
Please contact our Chesterfield Office on 01246 567540 if you wish to arrange a viewing appointment for this property or require further information.

These particulars, whilst believed to be accurate are set out as a general outline only for guidance and do not constitute any part of an offer or contract. Intending purchasers should not rely on them as statements of representation of fact, but must satisfy themselves by inspection or otherwise as to their accuracy. No person in this firm's employment has the authority to make or give any representation or warranty in respect of the property.

Area Map



Energy Efficiency Graph



131 Chatsworth Road, Chesterfield, Derbyshire, S40 2AP
T: 01246 567540



E: info@dalesandpeaks.co.uk
www.dalesandpeaks.co.uk